



KANEPACKAGE PHILIPPINE INC.

Implementation Date: 230731

☒ Permanent
☐ Temporary

ONE POINT LESSON

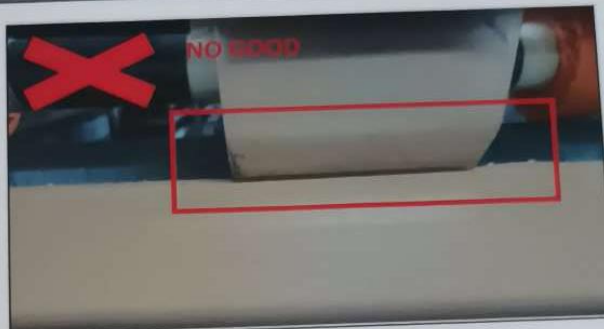
OBJECTIVE:

GOOD & NO GOOD SET UP OF LOCK SCREW FOR FEEDER STOPPER.

Purpose:

To prevent damage of inner side of panels and other defects on the item.

To aware the operator if the loose lock screw is cause by torn-out/damage thread of screw or wrong set-up of lock screw.



The effect of loose lock screw is that The feeder stopper got harsh touch with the panel, resulting in panel scraping and damage.

Prepared by:

Kyla Nicole Acuin
(Name & Sign)

CHECKED BY:

Noemi Cepeda
(Name & Sign)

APPROVED BY:

Rhodora Miranda
(Name & Sign)



If the lock screw is appropriately adjusted, the feeder stopper was fitted according to the panel thickness.

Note:

The appearance of the thread on the lock screw must be checked during the first set-up of the machine.